



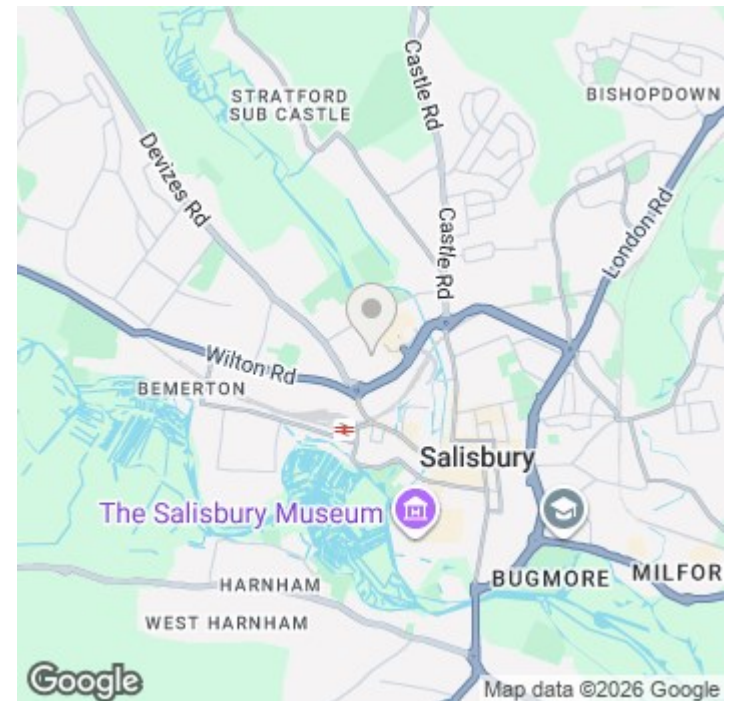
4 George Street, Salisbury, SP2 7BA

£1,350 PCM

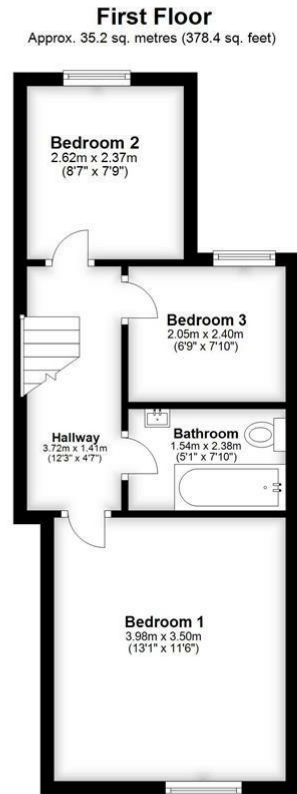
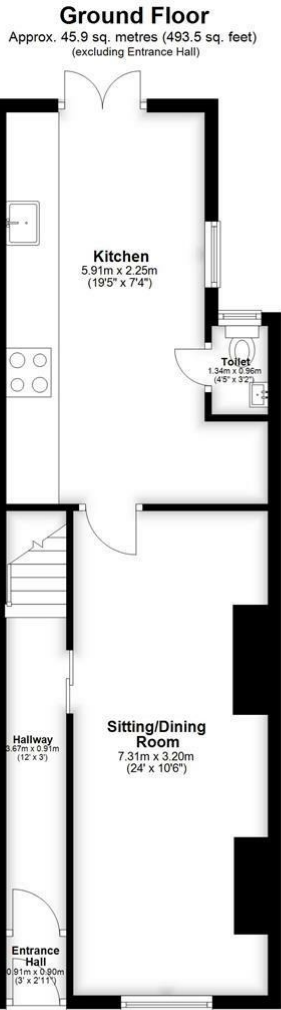
About The Property

ON HOLD DUE TO HIGH DEMAND A fully redecorated three-bedroom home in Salisbury with open-plan living, modern kitchen, and a private garden

- Fully redecorated throughout
- Newly recarpeted
- Open-plan living/dining room
- Character wooden flooring
- Modern fitted kitchen
- Built-in appliances
- Downstairs cloakroom
- Private garden with patio
- Large storage shed
- Three bedroom/flexible use







Total area: approx. 81.0 sq. metres (871.9 sq. feet)

Further Information

Let available date: 11th May 2026
NB: This date is provisional and will only be confirmed once referencing has been successfully completed.

Property type: Not specified

Furnish type: Unfurnished

Deposit: £1,555

Local authority: Wiltshire

Council Tax: Band C

EPC: C(71)

Energy Efficiency Rating

	Current	Potential
Very energy efficient - lower running costs		
(92 plus) A		
(81-91) B		
(69-80) C	71	77
(55-68) D		
(39-54) E		
(21-38) F		
(1-20) G		
Not energy efficient - higher running costs		
England & Wales	EU Directive 2002/91/EC 